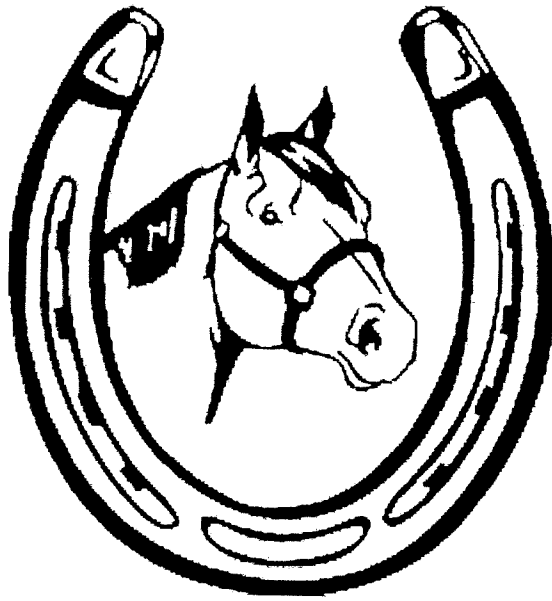


Mecosta County 4H

Horse and Pony

Project Book

16-19



Name: \_\_\_\_\_ 4H age: \_\_\_\_\_

Horses Name: \_\_\_\_\_

Club: \_\_\_\_\_

Number of Years in 4H Horse and Pony Project: \_\_\_\_\_

Leaders Signature: \_\_\_\_\_

Year: 2026

- minimum of 5 sentences

This image shows a single page of white paper with horizontal blue or grey ruling lines. The lines are evenly spaced and run across the width of the page. There is no handwriting or other markings on the paper.

## Health

Respirations \_\_\_\_\_

2. Name four ingredients commonly found in concentrate/grain mixtures and their purpose:

---

---

---

---

### **Hoof Parts**

3. This is the buffer between movements of the sole and hoof wall. \_\_\_\_\_  
\_\_\_\_\_
4. Protects the internal structures of the foot from injury. \_\_\_\_\_
5. Bears weight. \_\_\_\_\_
6. Absorbs shock and provides traction. \_\_\_\_\_
7. Widest part of the hoof. \_\_\_\_\_

### **Answer the following questions:**

8. What does the term behind the bit mean? How do you correct it? \_\_\_\_\_

---

---

---

---

---

---

---

9. What does the term ahead of the bit mean? How do you correct it? \_\_\_\_\_

---

---

---

---

---

---

---

10. When being judged, horses are bunched together while going around the arena. Describe what you should do to safely get out of the group. \_\_\_\_\_

---

---

---

---

11. What type of bit(s) can you use in a Western class for a horse whose age is 5 and under? \_\_\_\_\_

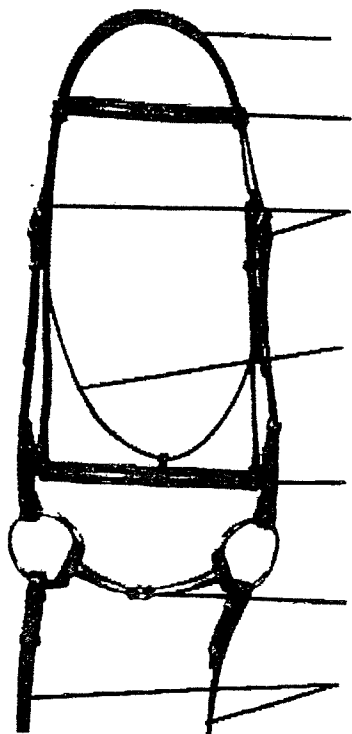
### Definitions

12. Striking fetlock or cannon with the opposite foot; most often done by base-narrow, toe-wide, or splay-footed horses.

13. Hocks close together, feet wide apart. \_\_\_\_\_

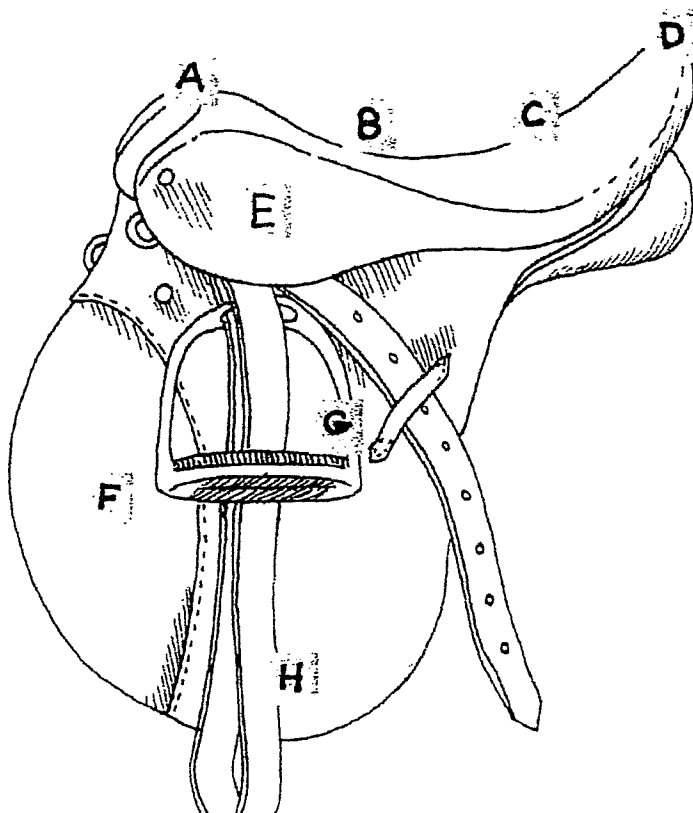
14. A horse that toes in on the front feet, usually paddle or wing out. May place front feet too close together. \_\_\_\_\_

Label the parts of the bridle.



Identify the parts of the saddle.

- A. \_\_\_\_\_
- B. \_\_\_\_\_
- C. \_\_\_\_\_
- D. \_\_\_\_\_
- E. \_\_\_\_\_
- F. \_\_\_\_\_
- G. \_\_\_\_\_
- H. \_\_\_\_\_



Draw and label a hoof with 2 ailments consisting of any disorder, disease, injury or condition. Describe the treatment plan for the ailed hoof.

1. \_\_\_\_\_

2. \_\_\_\_\_

Fill in the blanks.

1. \_\_\_\_\_

2. \_\_\_\_\_

3. \_\_\_\_\_

4. \_\_\_\_\_

5. \_\_\_\_\_

6. \_\_\_\_\_

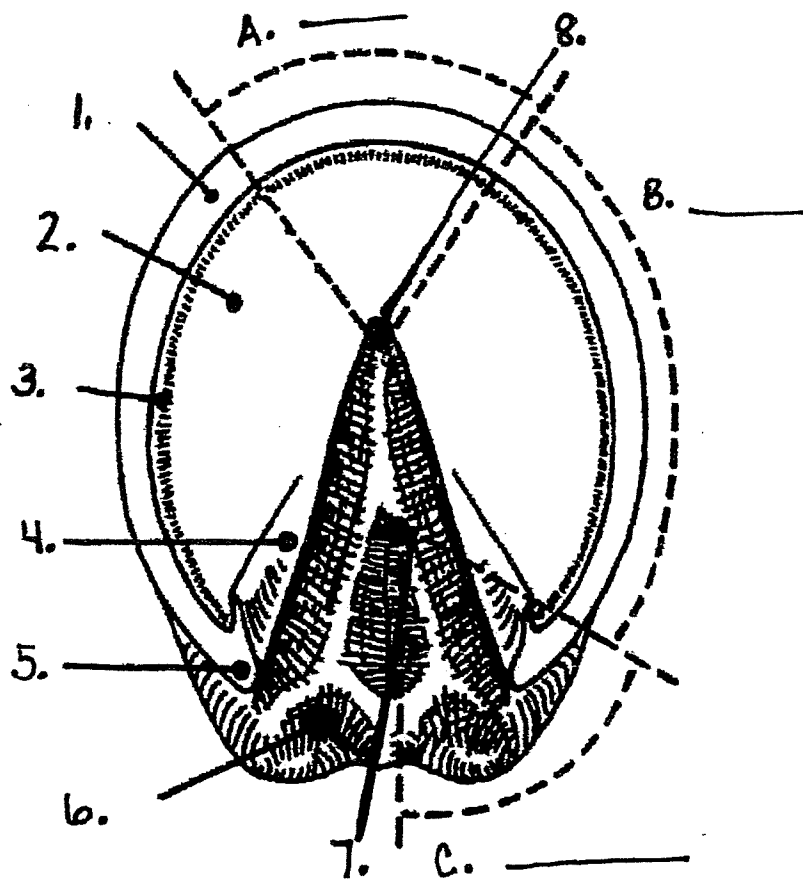
7. \_\_\_\_\_

8. \_\_\_\_\_

A. \_\_\_\_\_

B. \_\_\_\_\_

C. \_\_\_\_\_



Label the parts of the horse.

